



## Set up with videos:

Scan QR code or visit

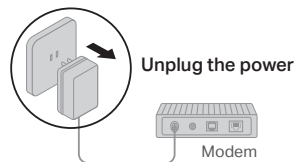
<https://www.tp-link.com/support/setup-video/#wi-fi-routers>



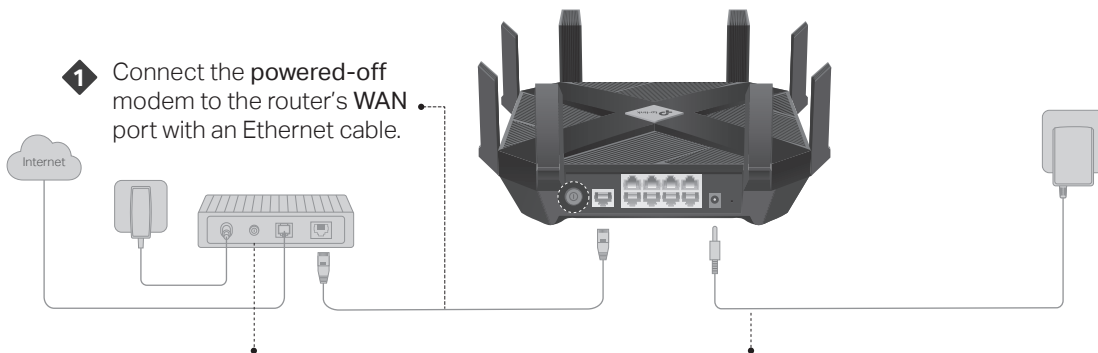
# 1 Connect the Hardware



- **Unplug the power** to turn off your modem, if any, and remove the backup battery if it has one.
- Place the router horizontally and orient the antennas vertically.



If your internet comes from an Ethernet outlet instead of a DSL / Cable / Satellite modem, connect the router's **WAN** port to it, then follow Step 3 and Step 4 to complete the hardware connection.



1 Connect the powered-off modem to the router's WAN port with an Ethernet cable.

2 Power on the modem, and then wait about 2 minutes for it to restart.

3 Connect the power adapter to the router and turn it on.

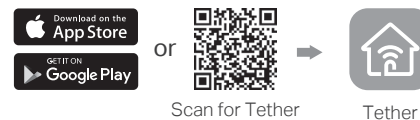
4 Verify the LED on the top is solid on (red or blue) before moving on.

\*Images may differ from actual product.

# 2 Set Up the Network

## Method ONE: Via TP-Link Tether App

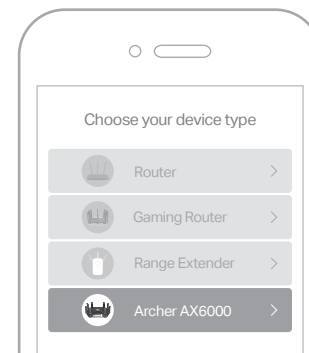
1. Download the Tether app.



2. Open the Tether app and log in with your TP-Link ID.

Note: If you don't have an account, create one first.

3. Tap the **+** button in the Tether app and select **Archer AX6000**. Follow the steps to complete the setup and connect to the internet.



Enjoy the internet !

To enjoy a more complete service from TP-Link, bind your TP-Link ID to the router.

## Method TWO: Via a Web Browser

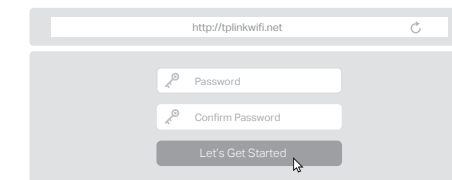
1. Connect your device to the router with an Ethernet cable or through a Wi-Fi network.

The default wireless network names (SSIDs) and password are printed on the label at the bottom of the router.



2. Launch a web browser, and enter <http://tplinkwifi.net> or <http://192.168.0.1> in the address bar. Create a password to log in.

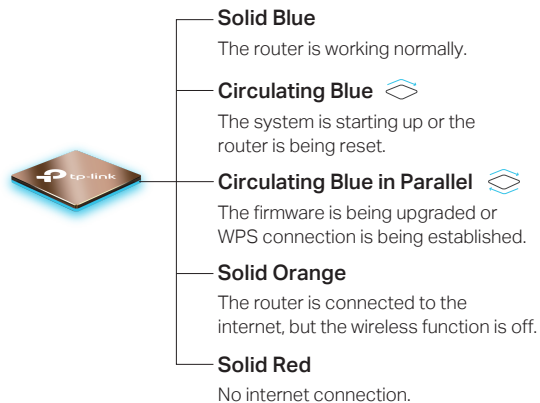
Note: If the login window does not appear, please refer to Q1 of Need Help? in this guide.



3. Follow the step-by-step instructions to set up the internet connection and register for the TP-Link Cloud service.

Enjoy the internet !

## LED Explanation



## Button Explanation



### WPS Button

Press the WPS button for 1 second, and immediately press the WPS button on your client to start the WPS process.

### Wi-Fi Button

Press and hold the Wi-Fi button for about 2 seconds to turn on or off the wireless function of your router.

### LED Button

Press the LED button for about 2 seconds to turn on or off the LED of your router.

### Safety Information

- Keep the device away from water, fire, humidity or hot environments.
- Do not attempt to disassemble, repair, or modify the device. If you need service, please contact us.
- Do not use damaged charger or USB cable to charge the device.
- Do not use any other chargers than those recommended.
- Do not use the device where wireless devices are not allowed.
- Adapter shall be installed near the equipment and shall be easily accessible.

## Need Help?



### Q1. What should I do if I can't access the web management page?

- Reboot your router and try again.
- If the computer is set to a static IP, change its settings to obtain an IP address automatically.
- Verify that <http://tplinkwifi.net> is correctly entered in the web browser. Alternatively, enter <http://192.168.0.1> or <http://192.168.1.1> in the web browser.
- Use another web browser and try again.
- Disable and enable the network adapter in use.

### Q2. What should I do if I can't access the internet?

- Power off your modem for about 5 minutes, then power it on and check the internet.
- Check if the internet is working normally by connecting a computer directly to the modem via an Ethernet cable. If it is not, contact your internet service provider.
- Log in to the web management page of the router, and go to the **Network Map** page to check whether the internet IP address is valid or not. If it's valid, go to **Advanced > Network > Internet**, click **Advanced Settings**, select **Use the Following DNS Addresses**, set the primary DNS to 8.8.8.8, and set the secondary DNS to 8.8.4.4. If it is not, check the hardware connection or contact your internet service provider.
- For cable modem users, log in to the web management page of the router. Go to **Advanced > Network > Internet > MAC Clone**, select **Clone Current Device MAC** and click **SAVE**. Then reboot both the modem and the router.

### Q3. What should I do if the router can't be found via Bluetooth in Tether (how to reset the router)?

The router's Bluetooth will be enabled for 30 minutes following a reset to factory defaults. There are two ways to reset the router:

- With the router powered on, use a pin to press and hold the **Reset** button on the back of the router for at least 2 seconds until the LED begins circulating blue.
- Log in to the web management page of the router. Go to **Advanced > System > Backup & Restore**, and click **FACTORY RESTORE**. The router will reset and restart automatically.

For technical support, replacement services, user guides, and other information, please visit <https://www.tp-link.com/support>.

To communicate with TP-Link users or engineers, please join the TP-Link Community at <https://community.tp-link.com>.

Email [techwriter@tp-link.com.cn](mailto:techwriter@tp-link.com.cn) to give suggestions.

©2020 TP-Link 7106509101 REV2.0.0



## Quick Installation Guide

Archer AX6000

AX6000 8-Stream Wi-Fi 6 Router